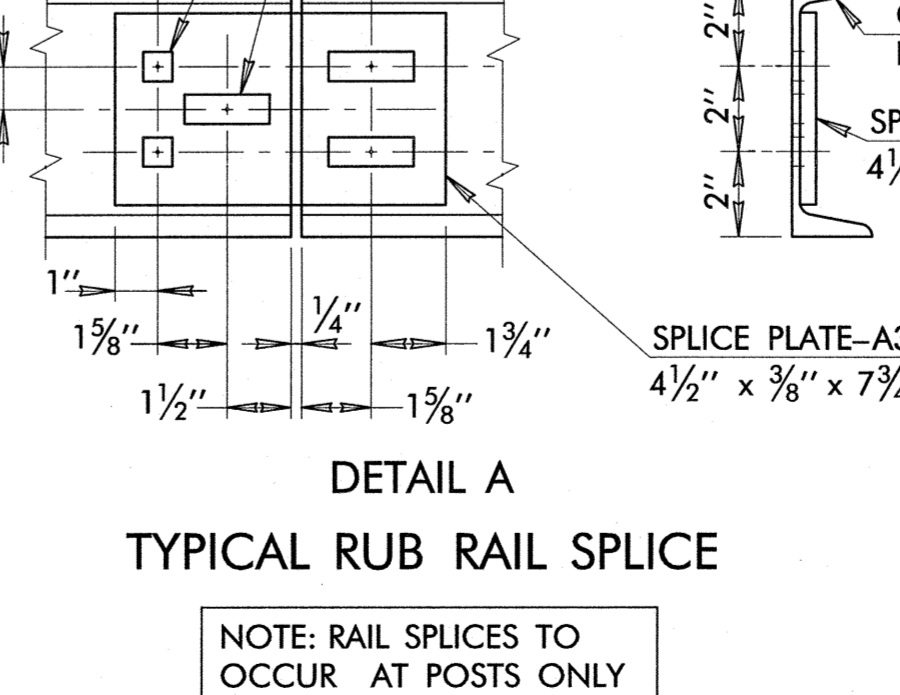
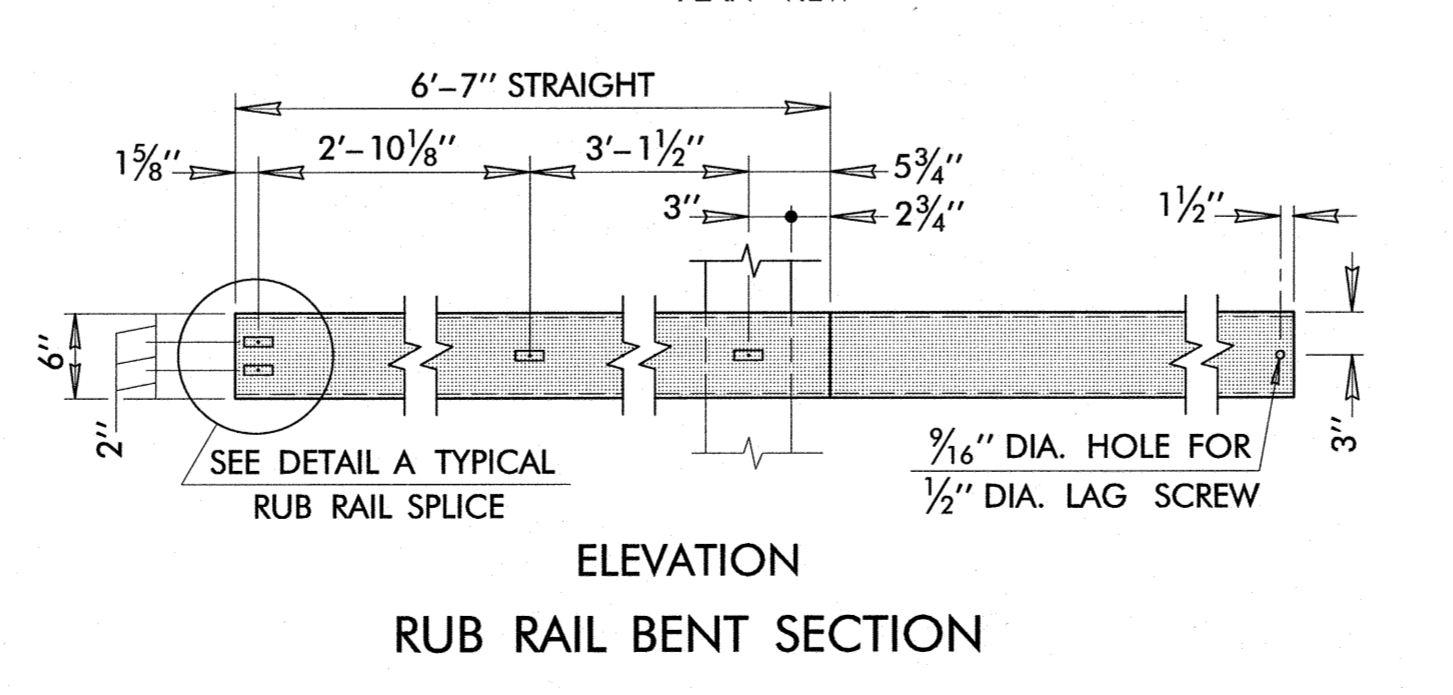
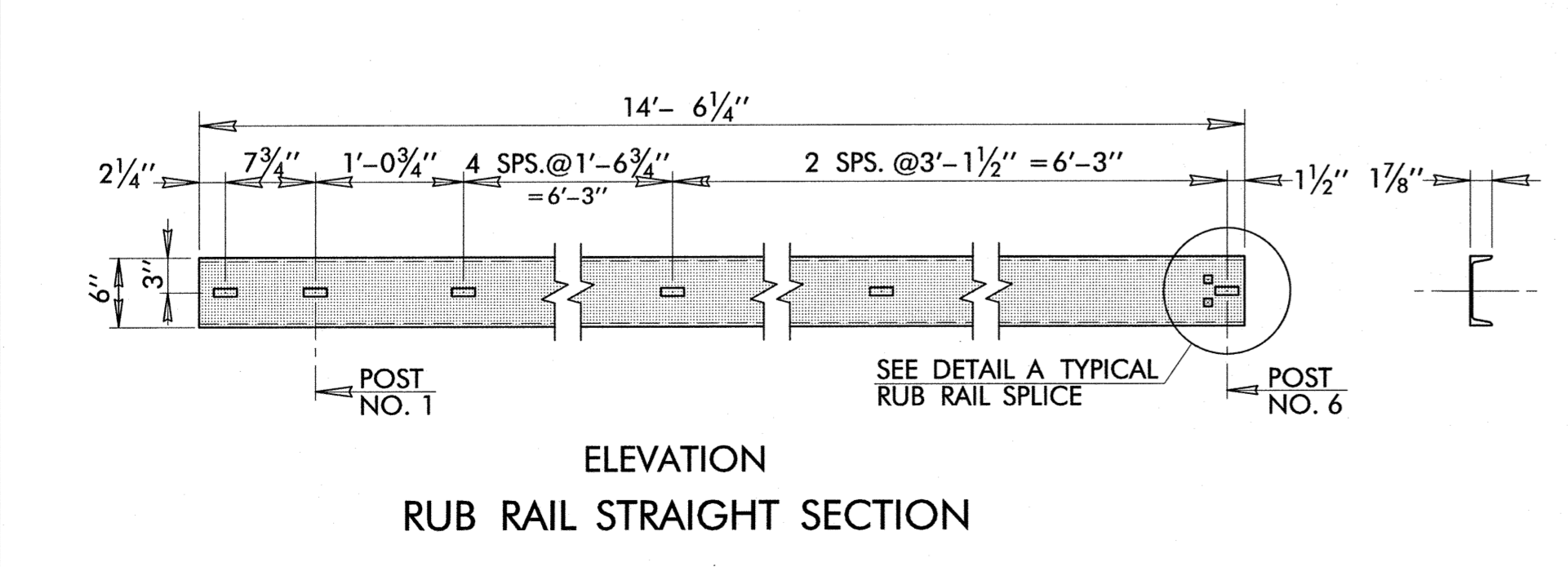
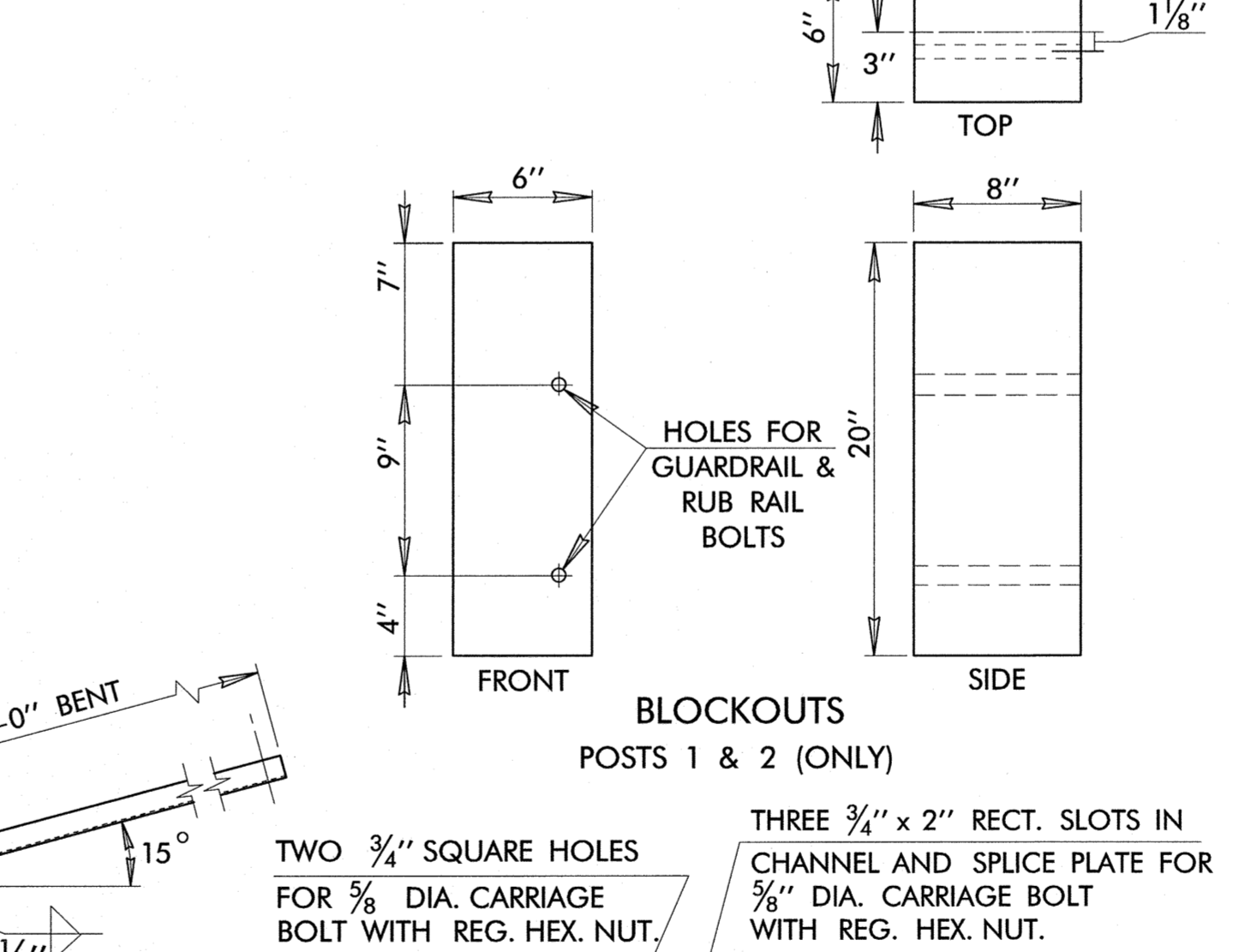
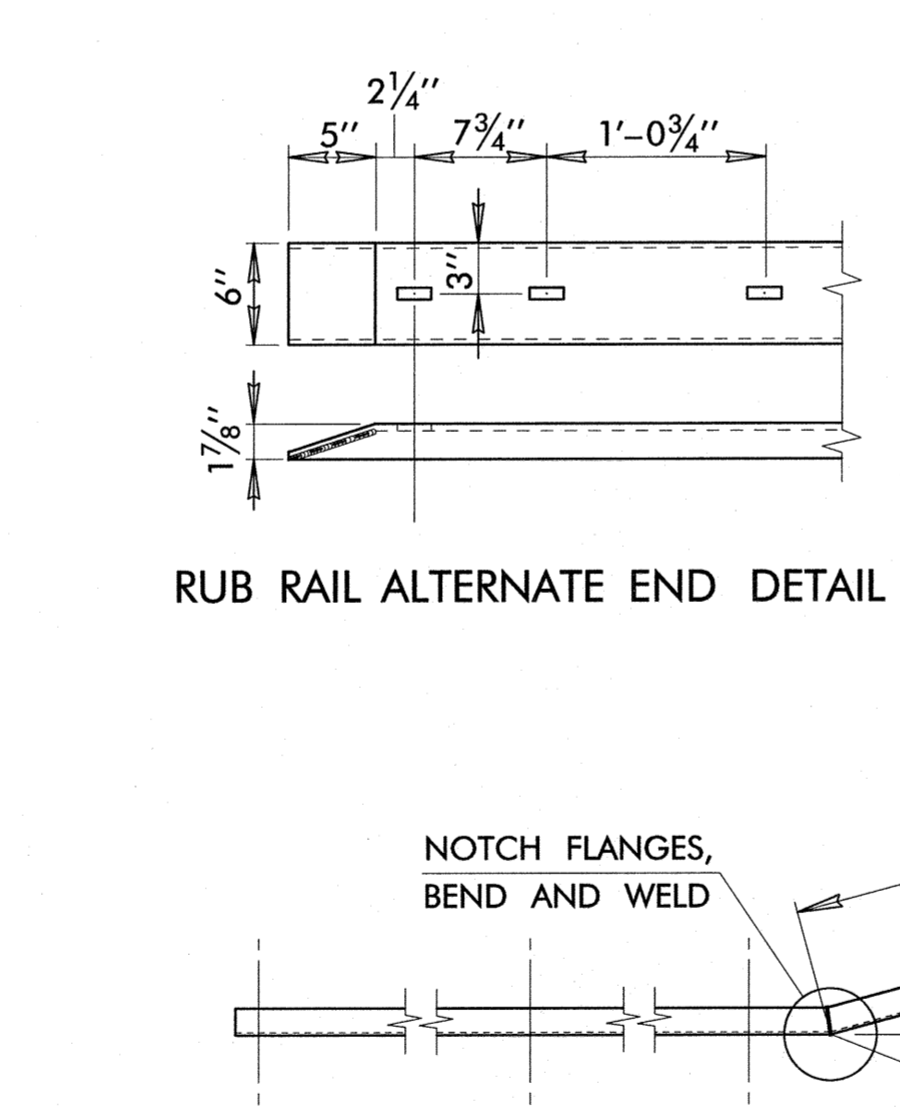
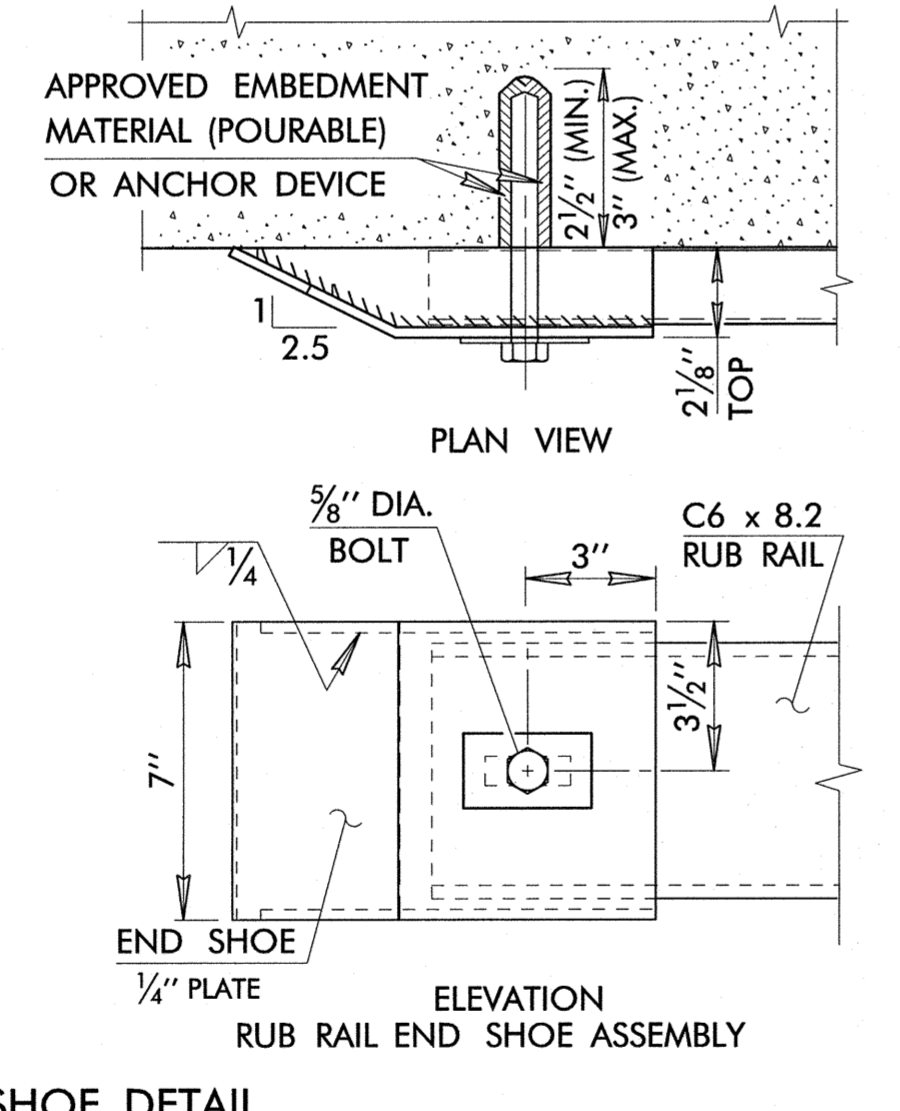
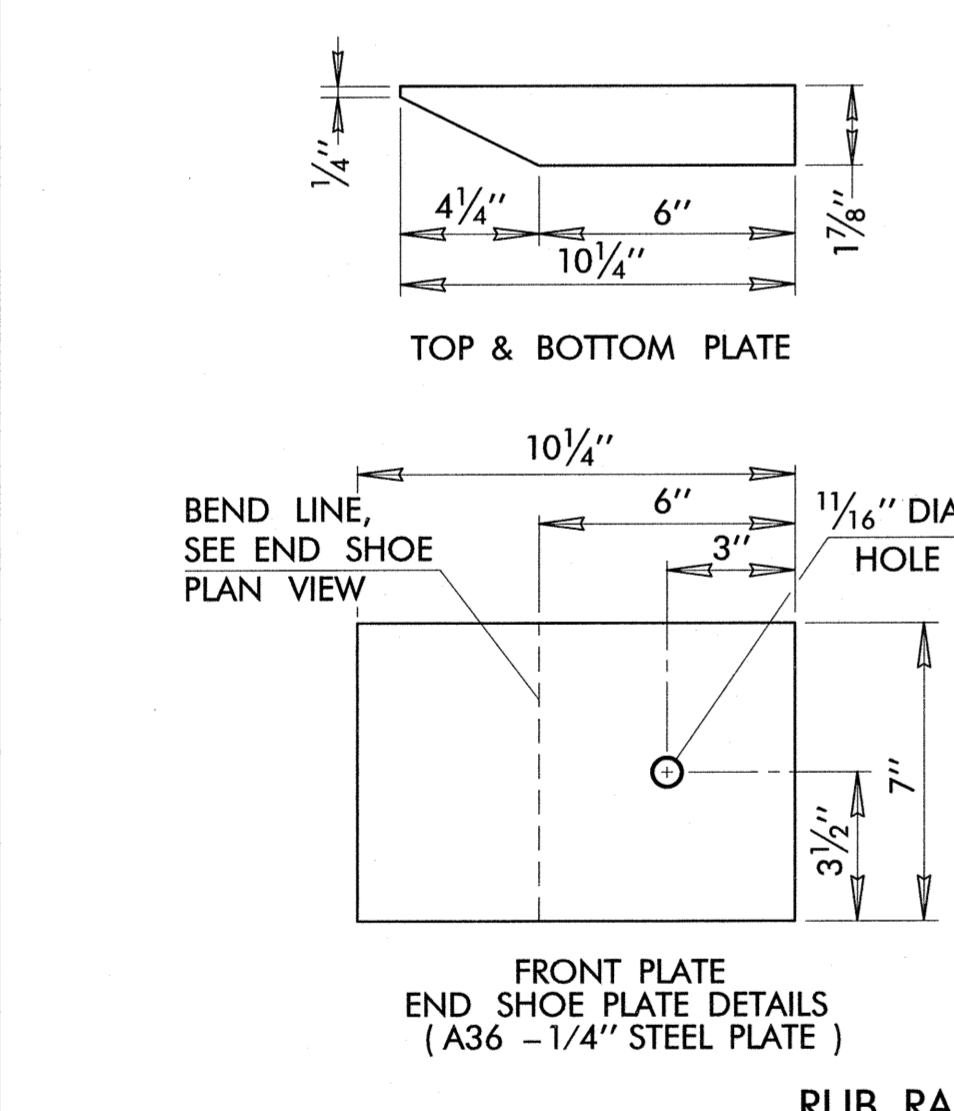
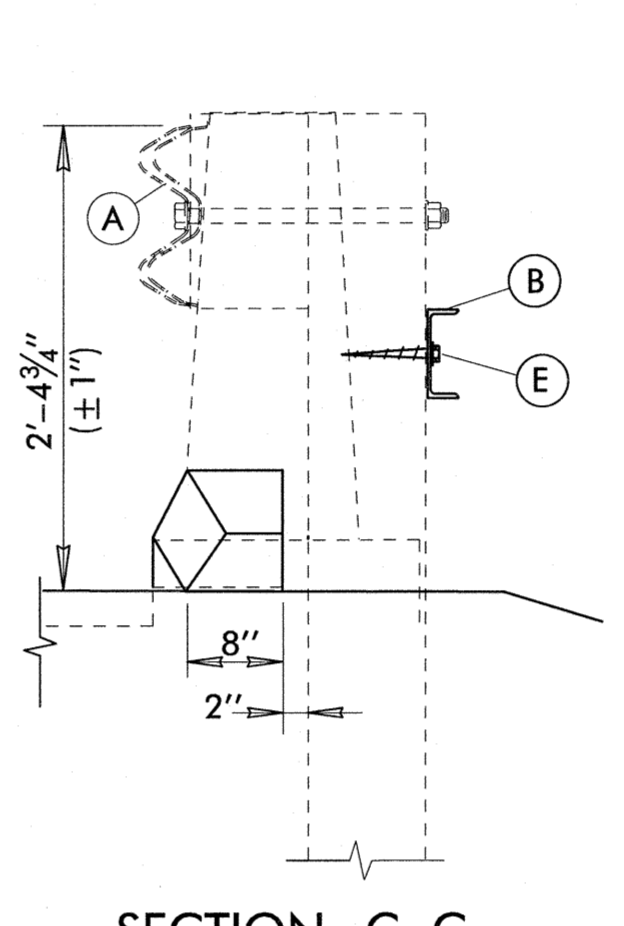
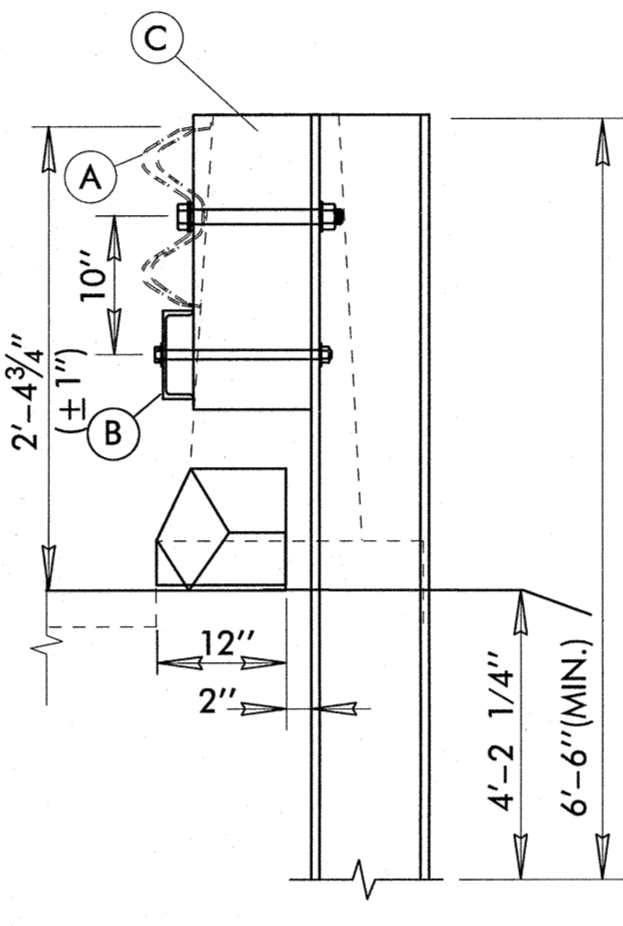
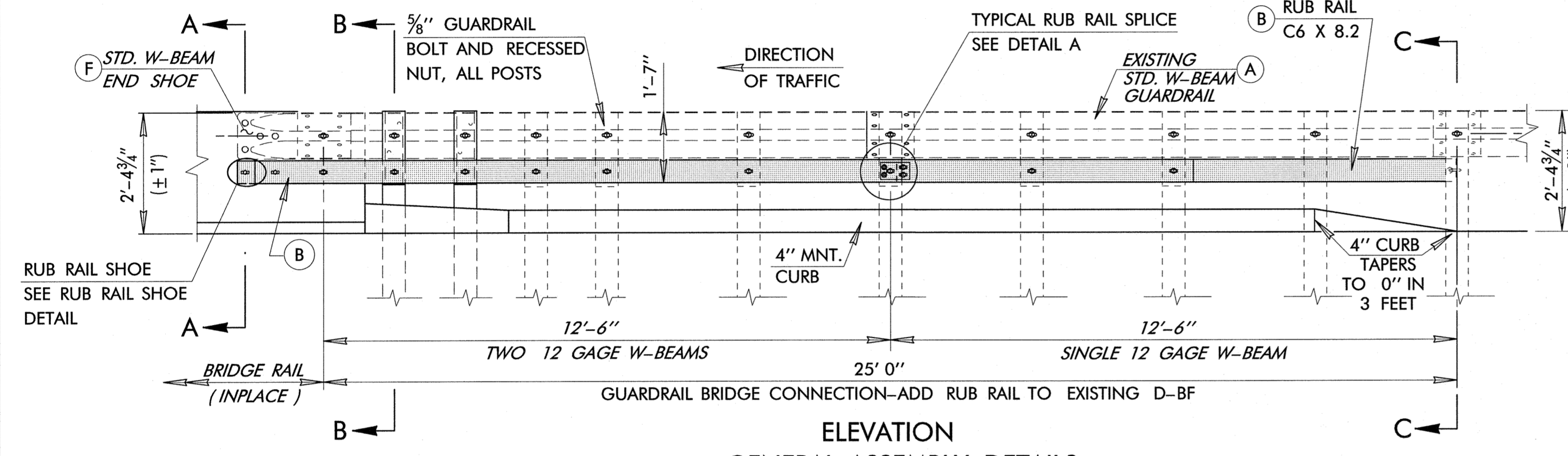
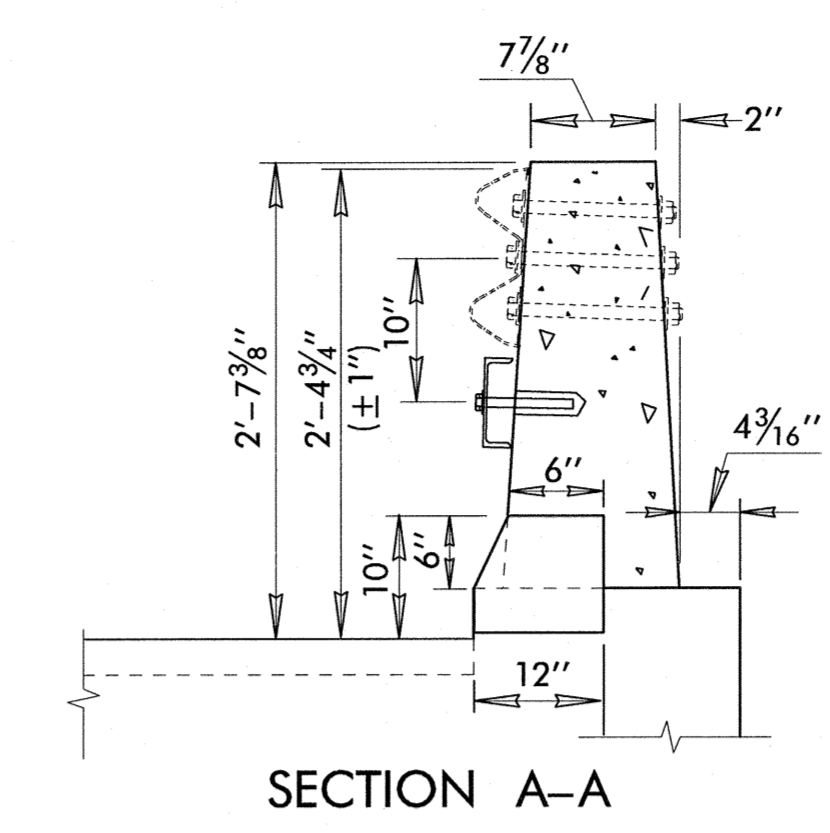
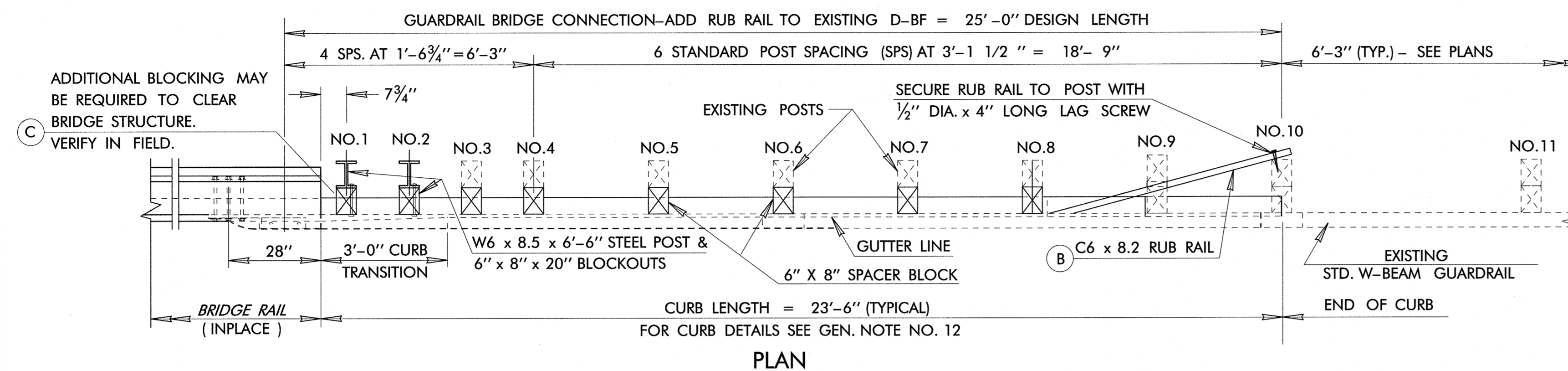


DESCRIPTION	REVISIONS	DATE



**GENERAL NOTES**

1. ALL CONSTRUCTION AND MATERIAL REQUIREMENTS SHALL BE IN ACCORDANCE WITH THE 2009 ENGLISH STANDARD SPECIFICATIONS.
2. THE BRIDGE CONTRACTOR SHALL PROVIDE HOLES FOR THE CONNECTION OF W-BEAM TERMINAL CONNECTOR (SPECIAL END SHOE) TO BRIDGE RAIL AND SLOPED FACE PARAPET. RETROFIT CONNECTIONS FOR GUARDRAIL (SPECIAL END SHOE) SHALL BE FIELD DRILLED BY THE SURFACING CONTRACTOR.
3. GUARDRAIL COMPONENTS SHALL MEET THE APPLICABLE STANDARDS OF "A GUIDE TO STANDARDIZED HIGHWAY BARRIER RAIL HARDWARE" PREPARED AND APPROVED BY THE AASHTO-ARTBA-AGC JOINT COMMITTEE, TECHNICAL BULLETIN NO. 268 B.
4. ALTERNATIVE POSTS MAY BE USED IN LIEU OF THE POSTS SHOWN ON THIS STANDARD, IF THEY ARE CERTIFIED AS NCHRP-350, TL-3, TESTED AND APPROVED BY THE ENGINEER.
5. WOOD BLOCKOUTS MAY BE USED IN LIEU OF THE COMPOSITE OR SYNTHETIC BLOCKOUTS, IF BLOCKOUT IS ODOT APPROVED.
6. POST SPACING AND FACE OF RAIL ALIGNMENT REMAINS THE SAME.
7. ALL SLOTTED HOLES ARE 11/16" x 2" & ALL SQUARE HOLES ARE 11/16".
8. RUB RAIL IS C6 X 8.2 STEEL CHANNEL, GALVANIZED AFTER FABRICATION IN ACCORDANCE WITH ASTM A123 SPECIFICATIONS.
9. ADDITIONAL BLOCKING MAY BE REQUIRED AT POSTS 1, 2 AND/OR 9.
10. FOR RUB RAIL NON-STANDARD LENGTHS, SEE RUB RAIL DETAILS.
11. TRANSITION HEIGHT FROM EXISTING HOLES IN PARAPET TO 1'-9 3/4" AT POST NO. 6.
12. FOR 4" MOUNTABLE CURB DETAILS, SEE ROADWAY STD. CSCD-5, LATEST REVISION.
13. RUB RAIL END SHOE NOT REQUIRED IF C-CHANNEL RUB RAIL IS FABRICATED WITH TAPERED END AND ATTACHED TO WALL AS SHOWN ON THIS SHEET (SEE RUB RAIL ALTERNATE END DETAIL).

**BILL OF MATERIAL**

DESCRIPTION	LENGTH/SIZE	QTY
5/8" DIA. GUARDRAIL BOLT & RECESSED NUT (POSTS 1-8)	22" MIN.	10
5/8" DIA. GUARD. BOLT & RECESSED NUT (RUB RAIL) (POSTS 1-8)	22" MIN.	8
5/8" DIA. CARRIAGE BOLT WITH NUT (RAIL SPlice)	1 1/2"	4
5/8" DIA. BOLTS WITH CONCRETE ANCHORS	5 3/4"	2
(E) 1/2" DIA. LAG SCREW (THROUGH RUBRAIL INTO POST NO. 10)	4"	1
(B) C6 X 8.2 RUB RAIL (BRIDGE TO POST NO. 6)	14'-6 1/4"	1
(B) C6 X 8.2 RUB RAIL (POST NO. 6 TO POST NO. 10)	12'-10"	1
3/8" THICK SPlice PLATE (RUB RAIL)	4 1/2" x 7 3/4"	1
(A) W-BEAM GUARDRAIL (12 GAUGE) EXISTING	12'-6"	
(F) W-BEAM GUARDRAIL ENDSHOE (12 GAUGE) EXISTING	30"	
W6 x 8.5 x 6'-6" STEEL POST (POSTS 1-2)	8'-0" MIN.	2
6" x 8" TIMBER POSTS (POSTS 3-10) EXISTING	7'-0" MIN.	
SINGLE PIECE BLOCKOUT FOR RUBRAIL & GUARDRAIL		
(C) 6" x 8" x 20" SPACER BLOCKS (POSTS 1-8)	1'-10"	8

**BASIS OF PAYMENT**

TEM NO.	ITEM	UNIT
623(1)	GUARDRAIL BRIDGE CONN (D-BF RETROFIT)	EA.

THE GUARDRAIL BRIDGE CONNECTION-ADD RUB RAIL TO EXISTING D-BF CONSISTS OF CONSTRUCTING AN ADDITIONAL GALVANIZED STEEL C-CHANNEL RUB RAIL AND ALL NECESSARY ADDITIONAL BLOCKOUTS, HARDWARE AND ENDSHOES, TO AN EXISTING W-BEAM GUARDRAIL CONNECTION AT A BRIDGE APPROACH. (SEE GENERAL NOTE NUMBERS 4 & 5.)

APPROVED BY TRAFFIC ENGINEER: *David Smay* DATE: 4/9/12

TRAFFIC STANDARD  
**GUARDRAIL BRIDGE CONNECTION-ADD RUB RAIL TO EXISTING D-BF (27 3/4" SYSTEM)**

2009 SPECIFICATIONS

DBF1-1	00
T-607	